

Diesel Switch

World of today



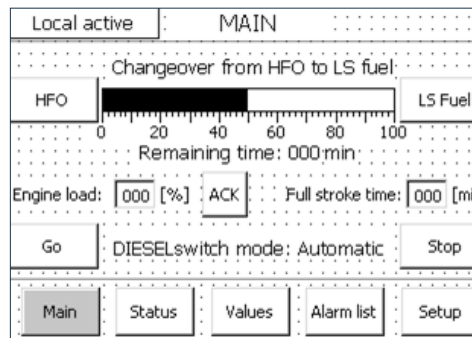
New rules and regulations are forcing ship owners and operators to operate their MAN B&W two-stroke main engines on ultra-low sulphur fuels in special areas. Further more, CARB (Californian Air Resource Board) has since 1 July, 2009 enforced the use of diesel oils (MDO) or gas oils (MGO) in Californian waters.

Changeover from preheated HFO to cold MDO/MGO and vice versa represents a risk of fuel pump sticking or seizure due to the very small clearances in the fuel pump. The Diesel Switch is able to do the changeover in a controlled way so that rapid temperature deviations are avoided.

This tendency is likely to spread and will, for instance, be introduced in European harbours from 1 January, 2010. This means more frequent changeovers.

As we find that the changeover between HFO and distillate fuels can give problems for the fuel equipment, the process will need a high degree of automation to avoid incidents.

MAN Diesel now offers the Diesel Switch, which ensures the necessary flexibility and safety when changing between HFO and MDO/MGO.



The principle of the Diesel Switch

Today MAN Diesel recommends to reduce the load to 25-40% to control the changeover.

The Diesel Switch ensures a controlled and safe changeover independent of the engine load.

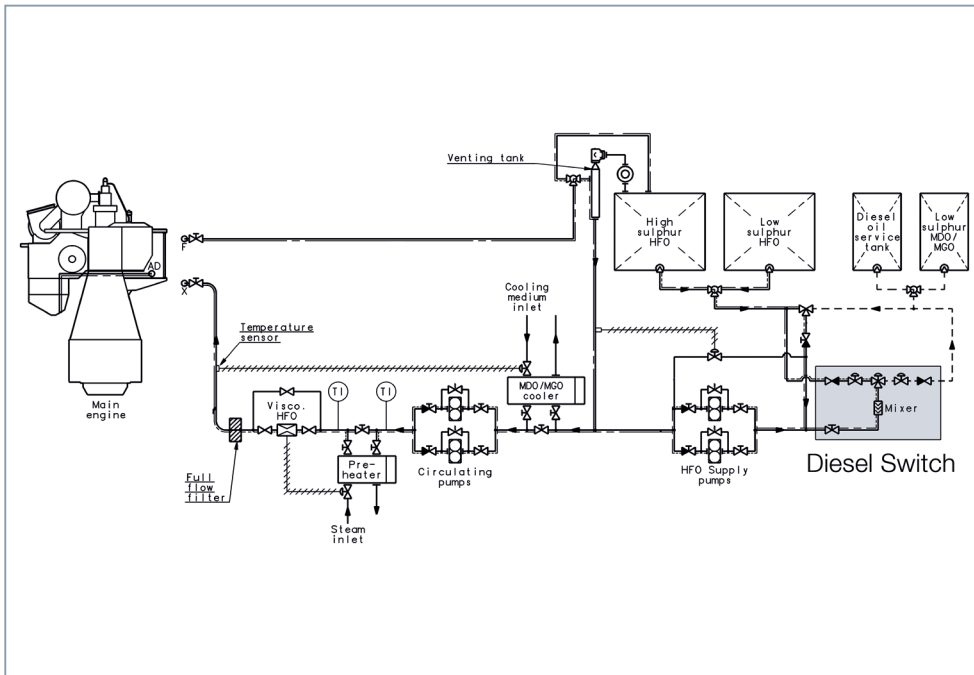
The Diesel Switch updates on a combination of the temperature at the engine and the time. If the fuel temperature at the engine inlet exceeds 2 degrees/minute the Diesel Switch will give an alarm and put the process on hold.

The process will be logged in the Diesel Switch so that it can be used as documentation to port authorities after the changeover.



Diesel Switch

World of today



The Diesel Switch offers:

- Touch screen control panel
- Control handle for the changeover
- Safety
- Data logging

Changeover valve

- Magnetic coupling
- Integrated sensor for actual position
- Integrated sensors for end positions
- Integrated connection box
- Manual override

Add-on options

- Controlling an MGO cooler or chiller
- Data logging of temperatures and pressures
- Remote operation possible with second touch screen

Copyright © MAN Diesel · Subject to modification in the interest of technical progress. · 3010-0091-00ppr-Sep 2009 Printed in Denmark

MAN Diesel

PrimeServ Copenhagen
Teglholmegade 41
2450 Copenhagen SV, Denmark
Phone +45 33 85 11 00
Fax +45 33 85 10 49
PrimeServ-cph@mandiesel.com
www.mandiesel.com